

# Miniature Paintings Catalog

*by J. Leahy*

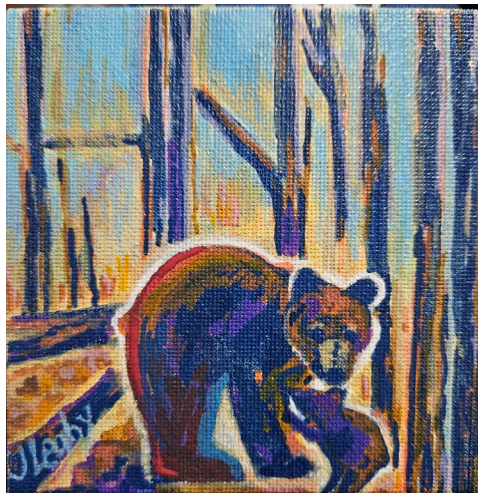
## Corner Building at Dusk



*Acrylic on canvas board, 3x2 in.*

At the edge of evening, the city glows from within. Light spills from every window, turning the building into a lantern against the soft blur of surrounding towers. Color traces the lines of the structure like quiet electricity, guiding the eye along its shining façade. In this tiny moment, the heartbeat of the city feels warm, alive, and full of promise.

## Forest Vigil



*Acrylic on canvas board, 4x4 in.*

Amid the tall, fire-scarred trees, a mother bear pauses with her cub pressed close to her side. Color ripples through their forms like warmth returning to a quiet world. Together they move through the hush—two beats of the same heart—finding safety, light, and belonging in the softened glow of the recovering forest.

### Winter Quiet Hymn



*Acrylic on canvas, 4x4 in.*

Nestled in a wash of lavender shadows and cool alpine light, these snow-laden pines stand like sentinels in a world hushed by winter. Their dark trunks lift the weight of the season with quiet grace, while distant violet mountains soften into the icy sky. Though small in scale, the scene opens into a vast, peaceful silence—inviting the viewer to pause, breathe, and feel the gentle stillness that only a winter landscape can hold.

### Lighthouse on the Coast (no longer available)



*Acrylic on canvas, 3.5x3 in.*

This vivid coastal scene blends restless surf, sunlit clouds, and rugged shoreline. The lighthouse rises as a steady presence amid the movement of sea and sky, reflecting the enduring strength of New England's maritime landscape.



### Morning on the Farm



*Acrylic on canvas, 3x3.5 in.*

In this tiny landscape, dawn drifts softly across the fields, brushing the barns and fences with gentle light. Colors shimmer in the sky like a memory half-kept, half-dreamed. The quiet farmstead rests beneath a tapestry of pastel clouds, inviting the viewer into a peaceful moment where time feels slow, warm, and familiar.

### Jesus



*Acrylic on canvas, 3.5x3 in.*

This portrait reflects Christ as the Shepherd of Psalm 23—steady, watchful, and ever-present. His gaze carries the quiet assurance of the One who leads beside still waters and restores the soul. In the layered strokes and gentle light, the viewer is invited to find comfort, guidance, and peace under the care of the Good Shepherd, who walks with His people through every valley.

### Chocorua



*Acrylic on canvas, 3.5 x 3 in.*

A tiny but vivid roadside snapshot of Mount Chocorua in New Hampshire. Bright autumn foliage fills the foreground as power lines stretch toward a snow-tipped peak in the distance. The motel sign and poles hint at travel, memory, and the places we pass through on the way to somewhere else. Despite its small scale, the painting carries the energy of a crisp fall day and the familiar look of rural New England.

### Spring Treasures

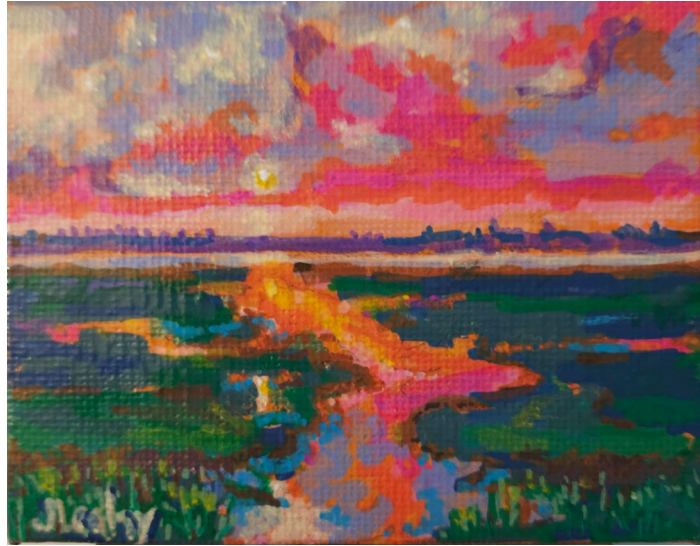


*Acrylic on canvas, 3 x 3.5 in.*

Vibrant eggs spill over a small wooden bowl, each brushstroke shimmering with color and whimsy. The warm glow behind them suggests morning light and the promise of celebration. Painted at miniature scale, the piece invites the viewer to lean in and enjoy its cheerful details.



## Marshlight



*Acrylic on canvas, 3 x 3.5 in.*

Bathed in neon-sunset hues, this miniature landscape transforms the familiar marsh into a luminous dreamscape. Layers of vivid color pulse across water and sky, celebrating the fleeting beauty of natural light and the emotional truth it awakens.

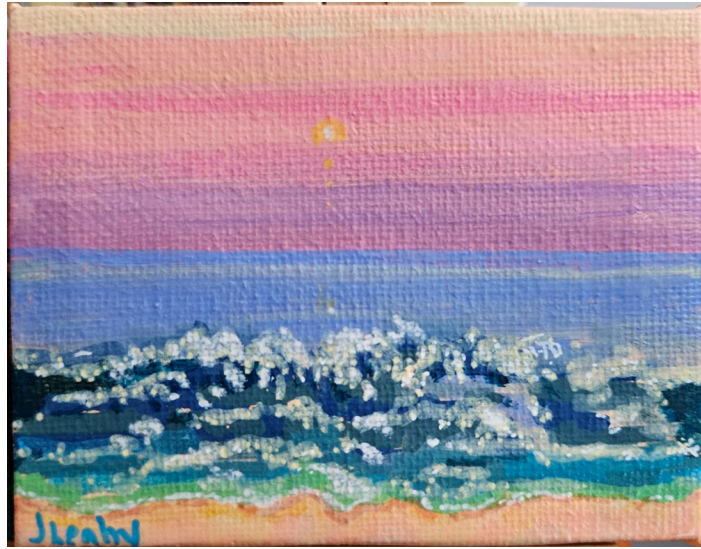
## Little Watcher (no longer available)



*Acrylic on canvas, 3.5 x 3 in.*

Small but mighty, this tiny feline sits like the secret ruler of the room – quiet, fluffy, and absolutely convinced you are here to admire him. With bright eyes full of mystery and a coat painted in magical stroke of peach and gold, Little Watcher feels like a pocket-sized guardian of cozy corners and warm sunbeams. Proof that sometimes the biggest personality fits in the tiniest frame.

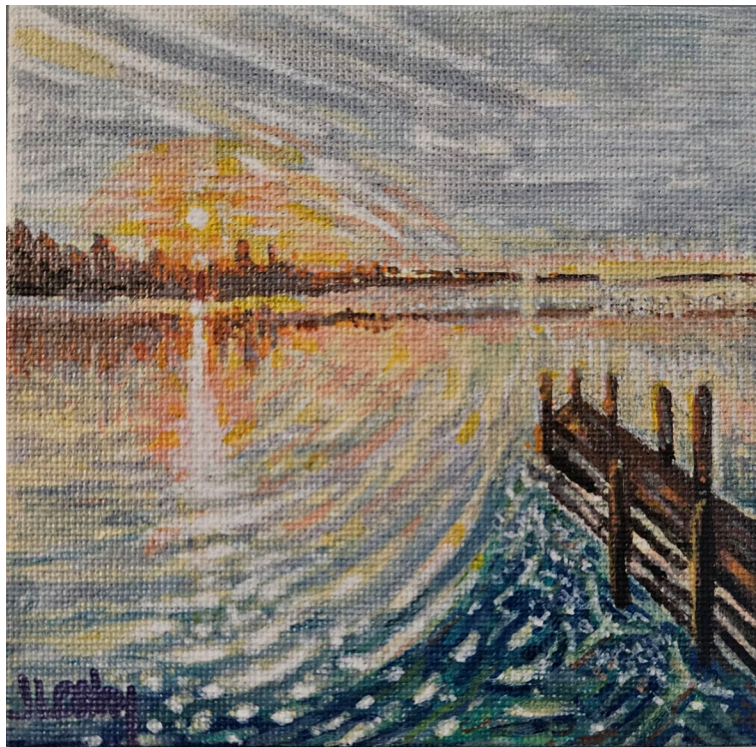
## Sea Set



*Acrylic on canvas, 3 x 3.5 in.*

A small-scale coastal study capturing the reflective movement of waves beneath a layered sunset sky. The soft transitions of color in the horizon and light-terraced surf emphasize calm, rhythm, and atmosphere.

## Dock at Dusk



*Acrylic on canvas board, 4 x 4 in.*

A small-format landscape capturing the last light over calm water. The sun drops behind the distant shoreline, casting warm reflections that ripple across the surface. A wooden dock extends into the foreground, anchoring the composition and creating depth.



### Pinecone



*Acrylic on canvas board, 4 x 4 in.*

A close observation of a single pinecone, rendered with layered earth tones and controlled highlights. The composition emphasizes form, texture and shadow, allowing the natural geometry of the pinecone to stand out against the neutral background.

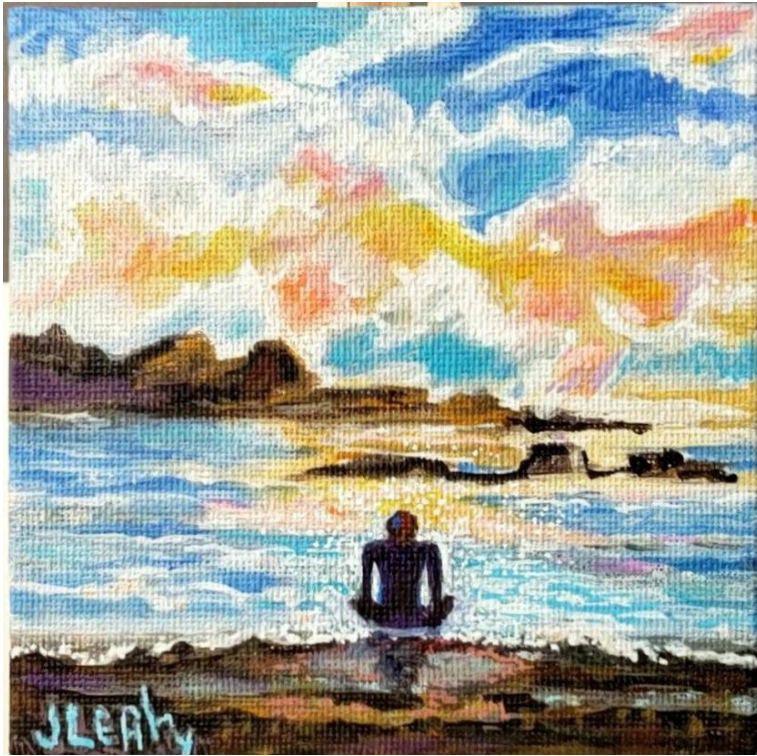
### Golden Horizon



*Acrylic on gesso board, 4 x 4 in.*

A glowing sunset spills light across the water, where sky and sea blend in shimmering bands of peach, gold, and blue.

## Meditation by the Sea



*Acrylic on canvas board, 4 x 4 in.*

A lone figure sits at the shoreline, gazing into a horizon of light and color, contemplative and serene.

## Rolling Surf



*Acrylic on canvas board, 4 x 4 in.*

The ocean churns with waves in motion — a study in blues, greens, and white foam.



### Golden Reflections



*Acrylic on gesso board, 4 x 4 in.*

Light dances across still waters, broken by reeds and trees — a meditation in shimmering blues and yellows.

### Sea Treasure



*Acrylic on gesso board, 4 x 4 in.*

A seashell rests at the ocean's edge, half-claimed by foamy waves, glistening in the surf.



### Drifting Jellyfish



*Acrylic on canvas board, 4 x 4 in.*

A jellyfish floats weightlessly through blue-green water, its tendrils trailing in luminous strands.

### Birch Path



*Acrylic on canvas board, 4 x 4 in.*

A sunlit path winds between tall birch trees, their white trunks standing bright against a blue sky. Wildflowers bloom at the edge.



### River Path



*Acrylic on gesso board, 4 x 4 in.*

A flowing river winds through lush greenery, leading the eye toward distant mountains beneath a bright sky.

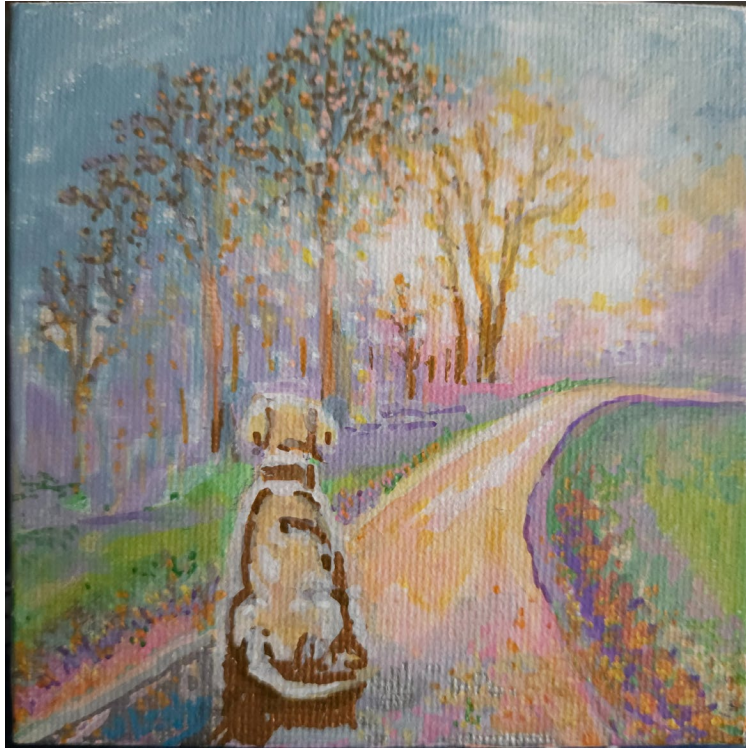
### Mountain Irises



*Acrylic on canvas board, 4 x 4 in.*

Purple irises burst in the foreground, while cottages and peaks rise behind them — a celebration of color and place.

### Blue Morning (Waiting Dog Landscape)



*Acrylic on canvas board, 4 x 4 in.*

A faithful companion sits at the edge of a winding path, gazing toward a luminous horizon.

### Snowy Pine

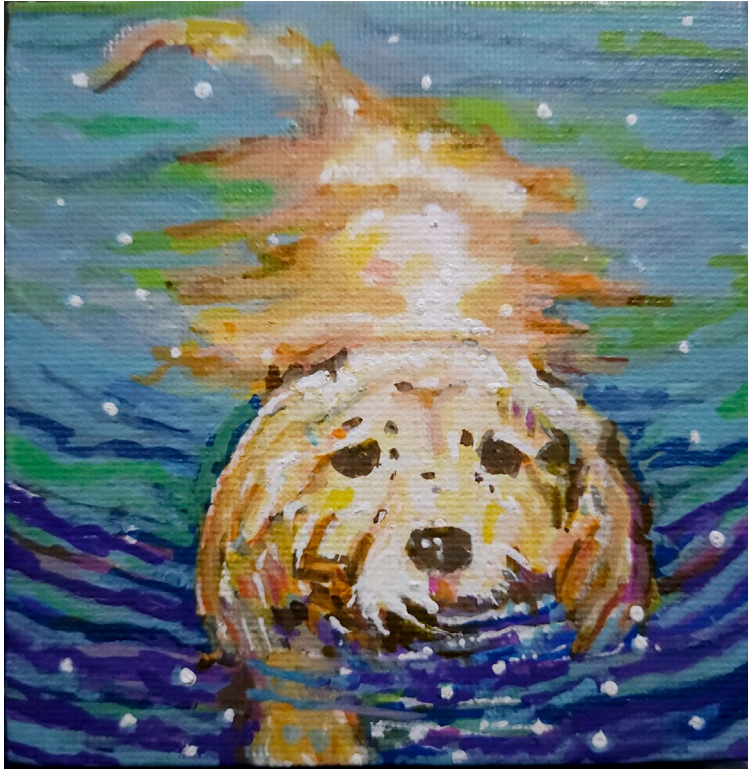


*Acrylic on canvas board, 4 x 4 in.*

A single pine stands in quiet strength, blanketed by snow beneath a wintry purple sky.



### Swimming Pup



*Acrylic on canvas board, 4 x 4 in.*

A playful golden dog paddles through rippling water, sunlight sparkling across its fur.

### Chestnut Horse



*Acrylic on canvas board, 4 x 4 in.*

The proud gaze of a horse, painted with vitality and strength.

### Black Cat with Amber Eyes



*Acrylic on canvas board, 4 x 4 in.*

A striking feline portrait, its golden eyes alight against a richly colored, painterly background.

### Fox and Cardinal



*Acrylic on canvas board, 4 x 4 in.*

A quiet woodland scene where a fox watches a bright red cardinal — a meeting of earth and sky.



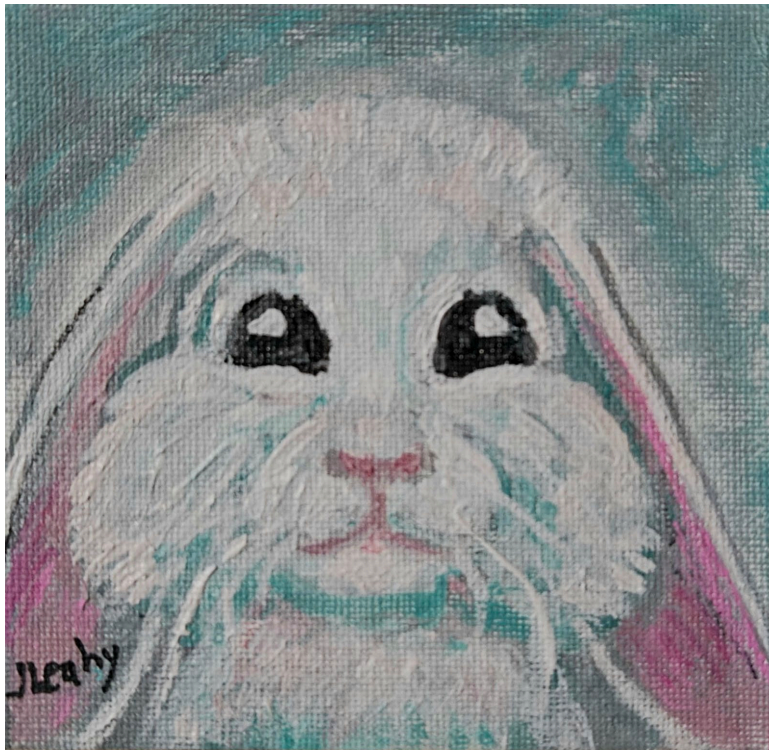
### Crow in the Rain



*Acrylic on canvas board, 4 x 4 in.*

A striking black crow stands before a red umbrella in the rain — mystery and resilience.

### Gentle Bunny



*Acrylic on canvas board, 4 x 4 in.*

A soft portrait of a white rabbit, painted with tenderness and pastel accents.

### Stone Cottage in Winter



*Acrylic on canvas board, 4 x 4 in.*

stedled among bare trees and snow, this rustic stone building glows with history and quiet endurance.

### Moonlit Cottage



*Acrylic on canvas board, 4 x 4 in.*

A country house under a silver moon, its colorful roof and glowing windows suggesting warmth against the night.



### Lifeguard Tower



*Acrylic on gesso board, 4 x 4 in.*

A lone figure walks toward an impression of a pink lifeguard tower, set beneath a sky alive with clouds and radiant colors.

### Morning Brew



*Acrylic on canvas board, 4 x 4 in.*

A warm cup of coffee captured in rich browns and highlights, offering the comfort of daily ritual.

### Summer Cherries



*Acrylic on canvas board, 4 x 4 in.*

Three bright cherries, lush and glossy, paired with green leaves on a light ground.

### Doll with Blue Eyes



*Acrylic on canvas board, 4 x 4 in.*

A whimsical portrait of a doll-like girl with bright blue eyes, dressed in warm tones against a playful dotted background.



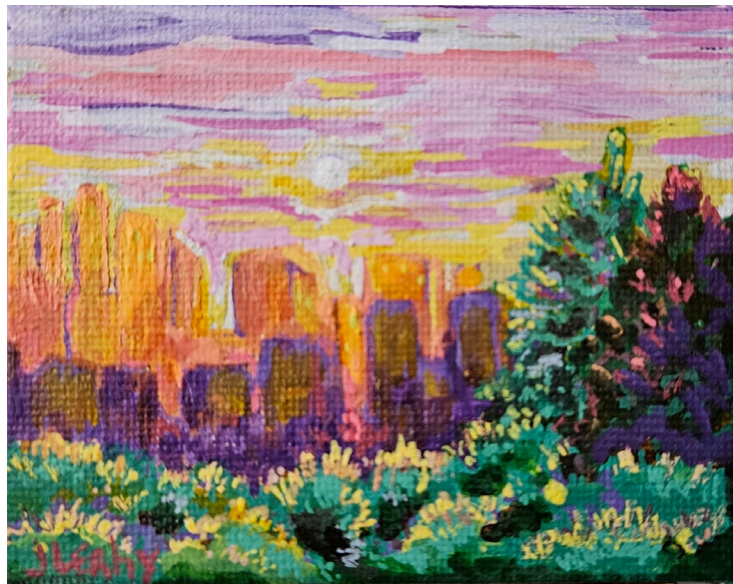
### Blue Mountain Mist



*Acrylic on canvas, 3.5 x 3 in.*

Layered blue mountains and reflective waters, softened by morning haze.

### Desert Glow



*Acrylic on canvas, 3 x 3.5 in.*

Fiery cliffs and a radiant sunset light up the desert, framed by blooming greens.

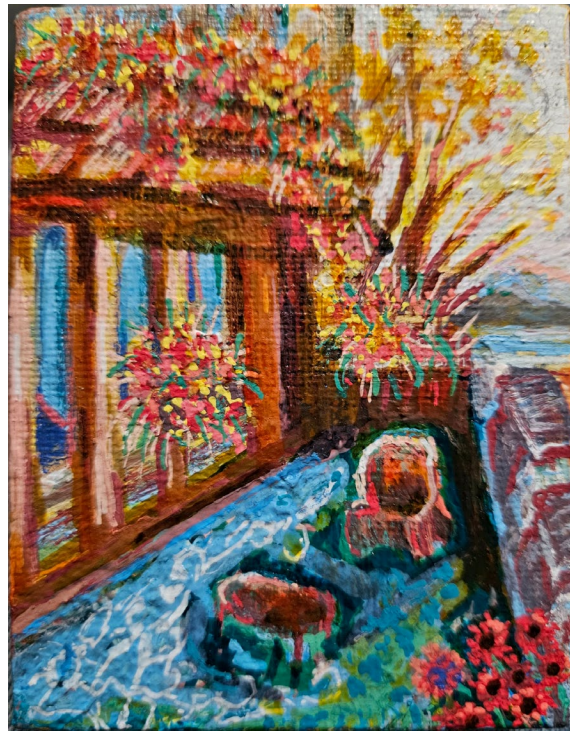
### Summer Tree



*Acrylic on canvas, 3.5 x 3 in.*

A full, leafy tree painted in bursts of green and white, a living canopy in miniature.

### Garden Terrace



*Acrylic on canvas, 3.5 x 3 in.*

A sunlit terrace alive with flowers and foliage, where warmth and color spill across the scene.



### Crossroads



*Acrylic on canvas, 3 x 3.5 in.*

Mountains rise beyond an open highway intersection, suggesting choice, travel, and possibility.

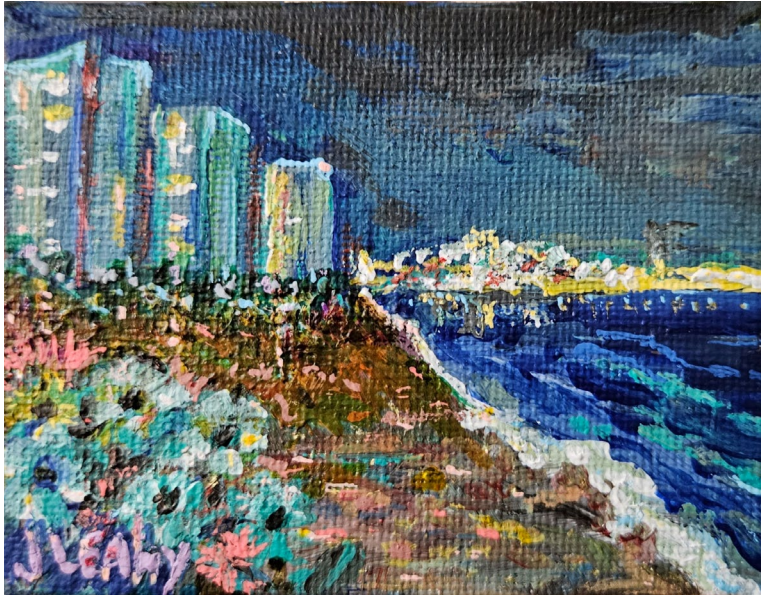
### Poppies in the Field



*Acrylic on canvas, 3 x 3.5 in.*

Vivid red poppies dance against a backdrop of mountains and open sky.

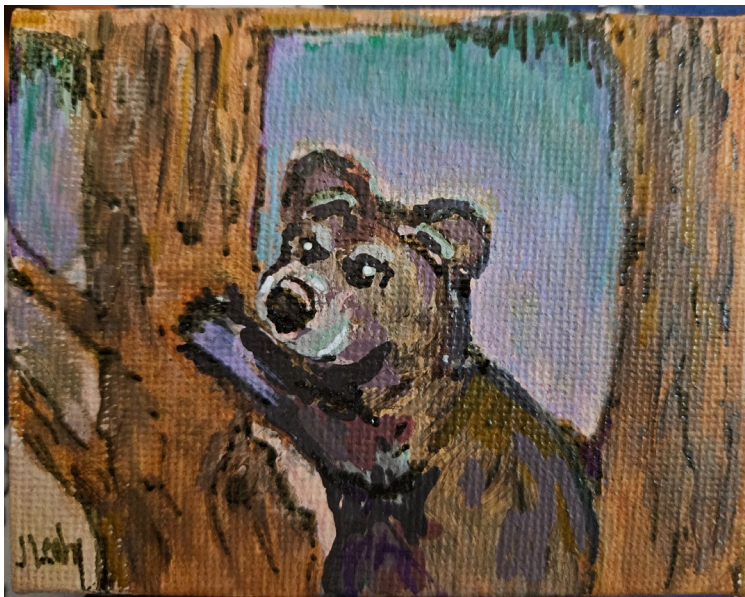
### City by Night



*Acrylic on canvas, 3 x 3.5 in.*

A seaside city glows under a deep sky, where shore lights meet dark water.

### Curious Cub



*Acrylic on canvas, 3 x 3.5 in.*

A bear cub peers playfully from behind a tree, capturing innocence and woodland charm.



### Valais Sheep



*Acrylic on canvas, 3 x 3.5 in.*

A small flock of Valais blacknose sheep — fluffy coats and dark faces full of character.

### Harbor Pelican



*Acrylic on canvas, 3.5 x 3 in.*

A pelican rests calmly on a dock against a shimmering sea, capturing a quiet coastal moment.

### Pink Rose



*Acrylic on canvas, 3.5 x 3 in.*  
A lush, layered rose blossoms in radiant pinks and violets.

### Country Truck



*Acrylic on canvas, 3 x 3.5 in.*  
A rustic red farm truck, full of character, rolls along a winding country road.



# About the Artist

J. Leahy's miniatures capture landscapes, seascapes, animals, flowers, and intimate moments with luminous color and narrative detail.

## Contact

Email: \_\_\_\_\_

Website: \_\_\_\_\_

Instagram: \_\_\_\_\_