

Miniature Paintings Catalog

by J. Leahy

Corner Building at Dusk



Acrylic on Artefex panel, 3x2 in.

At the edge of evening, the city glows from within. Light spills from every window, turning the building into a lantern against the soft blur of surrounding towers. Color traces the lines of the structure like quiet electricity, guiding the eye along its shining façade. In this tiny moment, the heartbeat of the city feels warm, alive, and full of promise.

The Narrow Coast



Acrylic on gessobord, 4x4 in.

Along New Hampshire's brief meeting with the Atlantic, land narrows and opens at once. Grasses rise from pale sand, shaped by wind and salt, while the horizon holds steady in layered blues. Painted on an intimate scale, *The Narrow Coast* reflects a place of pause—where stillness, memory, and quiet endurance meet at the edge of the sea.

The Beginning of Elsewhere



Mixed Media/Acrylic on Artefex linen panel, 5x7 in.

In a winter landscape, three children sit poised in small vehicles, suspended between play and passage. Beneath the quiet presence of a cabin and the flag above it, motion becomes metaphor—an early rehearsal for leaving, for choosing direction, for imagining worlds beyond the familiar.

The snow softens the scene, blurring boundaries between home and horizon, safety and possibility. What appears as innocence is also initiation: the first moment in which elsewhere becomes imaginable.

Here, childhood is not merely remembered—it is understood as the birthplace of distance, desire, and the long unfolding of becoming.

When Everything was Still Possible

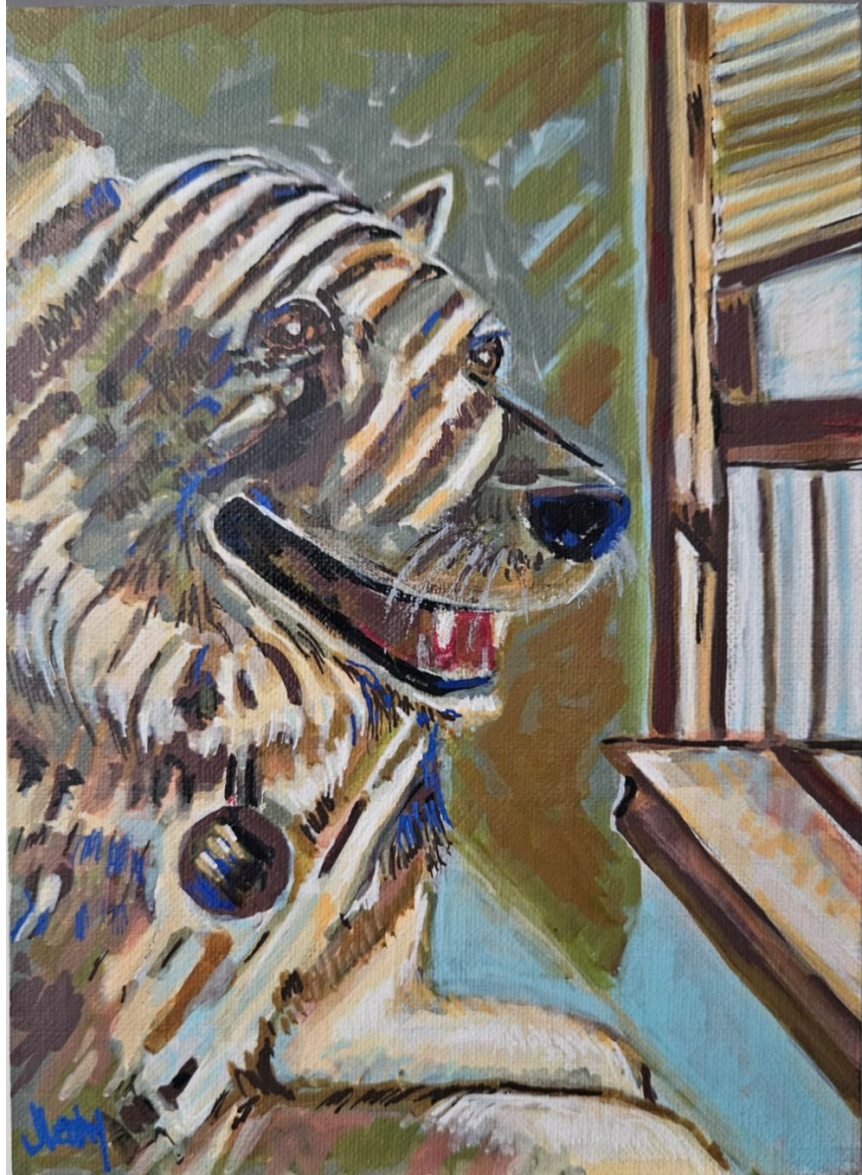


Acrylic on Artefex linen panel, 7x5 in.

Two figures pause at the edge of light, suspended between motion and horizon. The motorcycle rests, but the feeling of travel remains — a shared moment where the future is wide, unbroken, and radiant. The sky blooms with color not as landscape but as emotion: the way memory edits time, leaving only warmth, promise, and the illusion that nothing has yet been decided.

This painting speaks to that fragile interval in life when every road appears open — when companionship feels eternal and the world has not yet narrowed into certainty. It is less about destination than about the sweetness of believing in infinite directions.

The Warmth that Remains



Acrylic on Artefex linen panel, 7x5 in.

In this quiet interior moment, Bindi is rendered not only as a beloved dog, but as a lingering presence. Her body leans toward the window, where light enters softly, touching fur, wood, and air alike. She appears both grounded in the room and oriented toward something beyond it.

The layered brushstrokes—warm earth tones interrupted by flashes of blue—suggest memory in motion: imperfect, luminous, and alive. Rather than pursuing photographic detail, the artist allows emotion to guide form, letting color and gesture carry the weight of remembrance.

The Warmth That Remains is a meditation on love after loss. Though Bindi is gone, her essence endures in subtle ways—in familiar spaces, in light on surfaces, in the quiet emotional temperature of a room once shared. The painting becomes an act of holding on, not to grief, but to the gentle, persistent warmth that survives absence.

Lake Winnisquam – NH



Acrylic on gessobord, 4x4 in.

This painting centers on a rare structure set directly at the water's edge of Lake Winnisquam, elevated above the surface and integrated into the dock itself. Neither fully on land nor fully adrift, the building occupies a threshold space, shaped by the lake's presence and rhythms. Its stillness suggests a form of attention—an architecture that listens to the water beneath it, holding time in suspension rather than resisting it.

Harbor Gem



Acrylic on canvas, 3.5x3 in

Small in scale yet luminous in spirit, *Harbor Gem* centers on a lighthouse standing watch between sea and sky. Its steady form rises above the harbor, a quiet beacon meant to guide ships safely through uncertain waters. Below, red roofs gather like sheltering hearts, while the horizon softens into blues and grays that suggest distance, prayer, and passage. Painted with reverence and restraint, the lighthouse becomes more than architecture—it is a symbol of guidance, protection, and enduring light. Like a hidden gem along the shore, it reminds us that even the smallest lights can lead us home.

Quiet Passage



Acrylic on canvas, 3.5x3 in.

In this intimate seascape, a solitary sailboat moves steadily across calm water, its white sails catching an unseen wind. Rendered with economy and restraint, the painting invites close looking—where texture, color, and gesture carry the weight of motion and meaning. The boat becomes a symbol of quiet perseverance, suggesting journeys taken inward as much as forward, and moments of stillness within transition.

Granite Meets the Sea



Acrylic on gessobord, 4x4 in.

New Hampshire's coastline is brief but resolute—only a few miles where granite shoulders meet the Atlantic. In this small-format work, the land holds its ground against the sea, not in defiance, but in quiet endurance. Soft blues and turquoise waters move gently around ancient stone, suggesting time not as force, but as rhythm.

Stillness Between Us



Acrylic on gessobord, 5x5 in.

In *Stillness Between Us*, two swans incline toward one another across a surface of shifting color and light. Rendered through impressionistic gesture rather than precise detail, their forms emerge as a quiet convergence—an intimate moment held in balance. The surrounding water dissolves into layered hues of blue, violet, and rose, suggesting reflection not only of the figures, but of feeling itself.

Forest Vigil



Acrylic on canvas board, 4x4 in.

Amid the tall, fire-scarred trees, a mother bear pauses with her cub pressed close to her side. Color ripples through their forms like warmth returning to a quiet world. Together they move through the hush—two beats of the same heart—finding safety, light, and belonging in the softened glow of the recovering forest.

Winter Quiet Hymn



Acrylic on canvas board , 4x4 in.

Nestled in a wash of lavender shadows and cool alpine light, these snow-laden pines stand like sentinels in a world hushed by winter. Their dark trunks lift the weight of the season with quiet grace, while distant violet mountains soften into the icy sky. Though small in scale, the scene opens into a vast, peaceful silence—inviting the viewer to pause, breathe, and feel the gentle stillness that only a winter landscape can hold.

Winter Keepsake



Acrylic on gessobord, 4x4 in.

A single red ornament hangs in quiet stillness, seen through the eyes of a child. Painted at an intimate scale, *Winter Keepsake* recalls the small wonders of winter—ornaments unwrapped from tissue paper, evergreen branches brushing the room with their scent, and the soft glow of familiar decorations brought out year after year. It's a treasured object tied to memory.

Icy Road RT 121A



Acrylic on gessobord, 4x4 in.

Set along New Hampshire's Route 121A, **Icy Road** captures a familiar winter passage—where narrow pavement bends through dense trees and moonlight glances off frozen ground. The road curves quietly forward, its slick surface reflecting cold blues and pale light, while a small, illuminated building offers a momentary sense of warmth and orientation amid the darkness. Route 121A is not a road of speed but of attention. In winter, it demands patience, memory, and trust.

Weirs Beach



Acrylic on gessobord, 4x4 in.

Night settles over Weirs Beach, and the ordinary becomes luminous. Neon signs hum, headlights ripple across dark pavement, and figures pass through the glow like brief constellations. Painted as memory rather than map, this small work holds the sensation of summer evenings—movement, warmth, and the quiet ache of time slipping by. Here, light does not merely illuminate the scene; it remembers it.

Lighthouse on the Coast (no longer available)



Acrylic on canvas, 3.5x3 in.

This vivid coastal scene blends restless surf, sunlit clouds, and rugged shoreline. The lighthouse rises as a steady presence amid the movement of sea and sky, reflecting the enduring strength of New England's maritime landscape.

Still Facing the Sea



Acrylic on canvas, 3x3.5 in.

An empty chair rests beneath a red umbrella, oriented toward the open water. No figure occupies the space, yet presence lingers. The sea continues its steady rhythm, the sky drifts, and the moment feels paused rather than abandoned. *Still Facing the Sea* reflects on absence as a form of devotion — the idea that something, or someone, has stepped away, but has not truly left. The chair remains turned toward the horizon, suggesting attention, memory, and the enduring act of facing what is vast, even when no one is visibly there.

Morning on the Farm



Acrylic on canvas, 3x3.5 in.

In this tiny landscape, dawn drifts softly across the fields, brushing the barns and fences with gentle light. Colors shimmer in the sky like a memory half-kept, half-dreamed. The quiet farmstead rests beneath a tapestry of pastel clouds, inviting the viewer into a peaceful moment where time feels slow, warm, and familiar.

Jesus



Acrylic on canvas, 3.5x3 in.

This portrait reflects Christ as the Shepherd of Psalm 23—steady, watchful, and ever-present. His gaze carries the quiet assurance of the One who leads beside still waters and restores the soul. In the layered strokes and gentle light, the viewer is invited to find comfort, guidance, and peace under the care of the Good Shepherd, who walks with His people through every valley.

Chocorua



Acrylic on canvas, 3.5 x 3 in.

A tiny but vivid roadside snapshot of Mount Chocorua in New Hampshire. Bright autumn foliage fills the foreground as power lines stretch toward a snow-tipped peak in the distance. The motel sign and poles hint at travel, memory, and the places we pass through on the way to somewhere else. Despite its small scale, the painting carries the energy of a crisp fall day and the familiar look of rural New England.

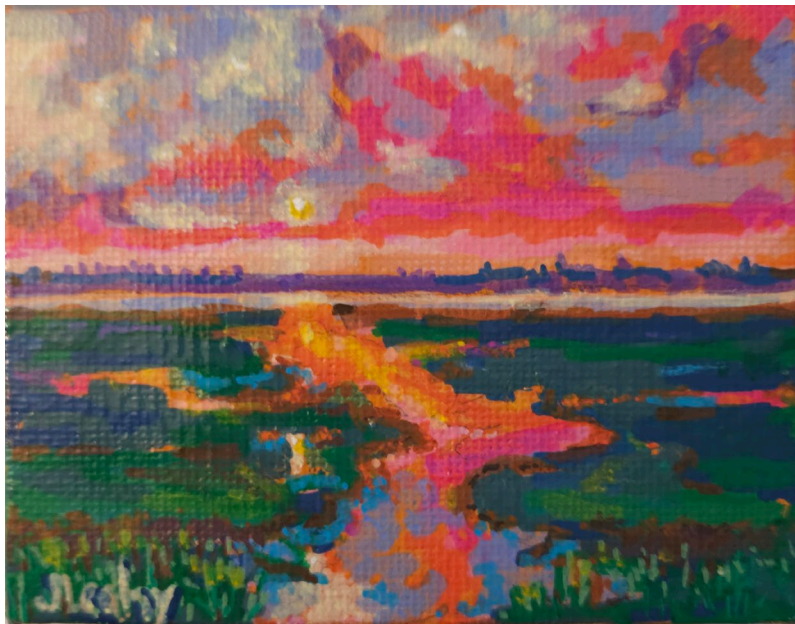
Spring Treasures



Acrylic on canvas, 3 x 3.5 in.

Vibrant eggs spill over a small wooden bowl, each brushstroke shimmering with color and whimsy. The warm glow behind them suggests morning light and the promise of celebration. Painted at miniature scale, the piece invites the viewer to lean in and enjoy its cheerful details.

Marshlight



Acrylic on canvas, 3 x 3.5 in.

Bathed in neon-sunset hues, this miniature landscape transforms the familiar marsh into a luminous dreamscape. Layers of vivid color pulse across water and sky, celebrating the fleeting beauty of natural light and the emotional truth it awakens.

Little Watcher (no longer available)



Acrylic on canvas, 3.5 x 3 in.

Small but mighty, this tiny feline sits like the secret ruler of the room – quiet, fluffy, and absolutely convinced you are here to admire him. With bright eyes full of mystery and a coat painted in magical stroke of peach and gold, Little Watcher feels like a pocket-sized guardian of cozy corners and warm sunbeams. Proof that sometimes the biggest personality fits in the tiniest frame.

Reflected Power



Acrylic on gessobord, 5 x 5 in

In *Reflected Power*, the Capitol emerges not as a distant symbol, but as a presence filtered through motion, light, and human passage. The dome glows above the street, its authority softened and multiplied by reflection—fractured across wet pavement, passing cars, and shifting color. Power here is not fixed or absolute; it is refracted, interpreted, and shared.

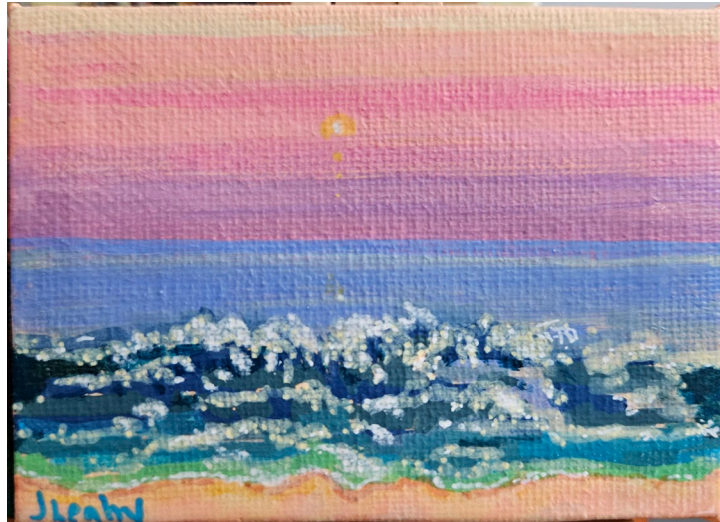
Boston North End



Acrylic on canvas, 3.5 x 3 in.

One of Boston's oldest neighborhoods, the North End has long been shaped by waves of arrival, trade, and tradition. Narrow streets and closely stacked buildings reflect a city built before the age of automobiles—designed for walking, gathering, and daily ritual. In this small-scale painting, architecture presses inward, echoing the density of history held within these blocks. Warm reds and weathered greens recall brick, stone, and time-worn facades, while loose, gestural marks suggest generations of movement below—shopkeepers, families, and passersby whose lives have animated these streets for centuries. The intimate size invites close viewing, much like the North End itself, where history is encountered not in monuments alone, but in everyday corners.

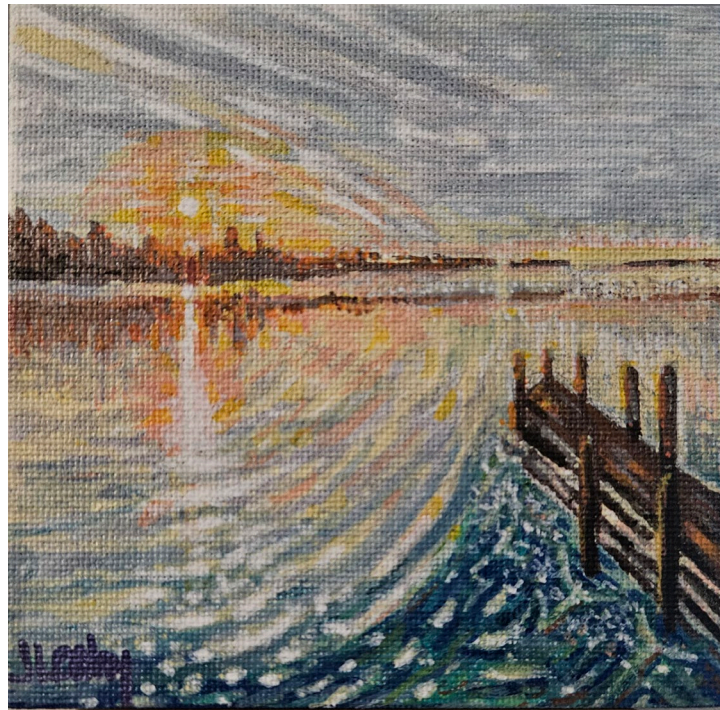
Sea Set



Acrylic on canvas, 3 x 3.5 in.

A small-scale coastal study capturing the reflective movement of waves beneath a layered sunset sky. The soft transitions of color in the horizon and light-terraced surf emphasize calm, rhythm, and atmosphere.

Dock at Dusk



Acrylic on canvas board, 4 x 4 in.

A small-format landscape capturing the last light over calm water. The sun drops behind the distant shoreline, casting warm reflections that ripple across the surface. A wooden dock extends into the foreground, anchoring the composition and creating depth.

Between Palms and Sea



Acrylic on gessobord, 4 x 4 in.

Palms rise like quiet sentinels as a pale path drifts toward the sea. Florida's light—salted, warm, and endlessly forgiving—moves through the scene, softening edges and slowing time. In this small painting, land gives way to water, and the ordinary becomes luminous, offering a moment of rest, remembrance, and gentle escape.

Pinecone



Acrylic on canvas board, 4 x 4 in.

A close observation of a single pinecone, rendered with layered earth tones and controlled highlights. The composition emphasizes form, texture and shadow, allowing the natural geometry of the pinecone to stand out against the neutral background.

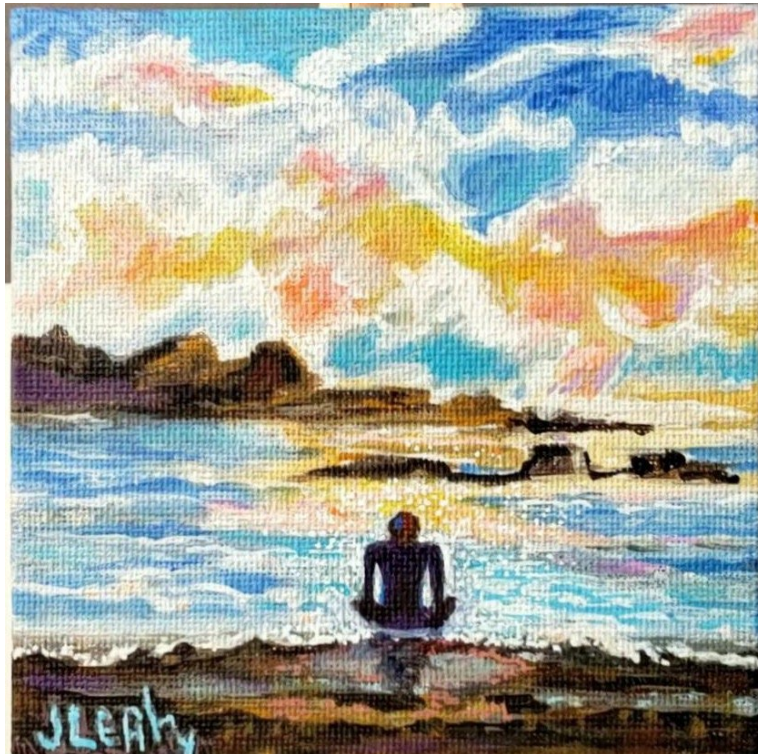
Golden Horizon



Acrylic on gessobord, 4 x 4 in.

A glowing sunset spills light across the water, where sky and sea blend in shimmering bands of peach, gold, and blue.

Meditation by the Sea



Acrylic on canvas board, 4 x 4 in.

A lone figure sits at the shoreline, gazing into a horizon of light and color, contemplative and serene.

Rolling Surf



Acrylic on gessobord, 4 x 4 in.

The ocean churns with waves in motion — a study in blues, greens, and white foam.

Golden Reflections



Acrylic on gessobord, 4 x 4 in.

Light dances across still waters, broken by reeds and trees — a meditation in shimmering blues and yellows.

Sea Treasure



Acrylic on gessobord, 4 x 4 in.

A seashell rests at the ocean's edge, half-claimed by foamy waves, glistening in the surf.

Drifting Jellyfish



Acrylic on canvas board, 4 x 4 in.

A jellyfish floats weightlessly through blue-green water, its tendrils trailing in luminous strands.

Birchlight



Acrylic on gessobord, 4 x 4 in.

Light enters quietly here. Birch trunks rise in close company, pale and slender, holding the day as if it were breath. The air feels northern — spare, clear, and cool — the kind of light found along New Hampshire back roads, where trees thin and the world briefly opens.

Birch Path



Acrylic on canvas board, 4 x 4 in.

A sunlit path winds between tall birch trees, their white trunks standing bright against a blue sky. Wildflowers bloom at the edge.

River Path



Acrylic on gessobord, 4 x 4 in.

A flowing river winds through lush greenery, leading the eye toward distant mountains beneath a bright sky.

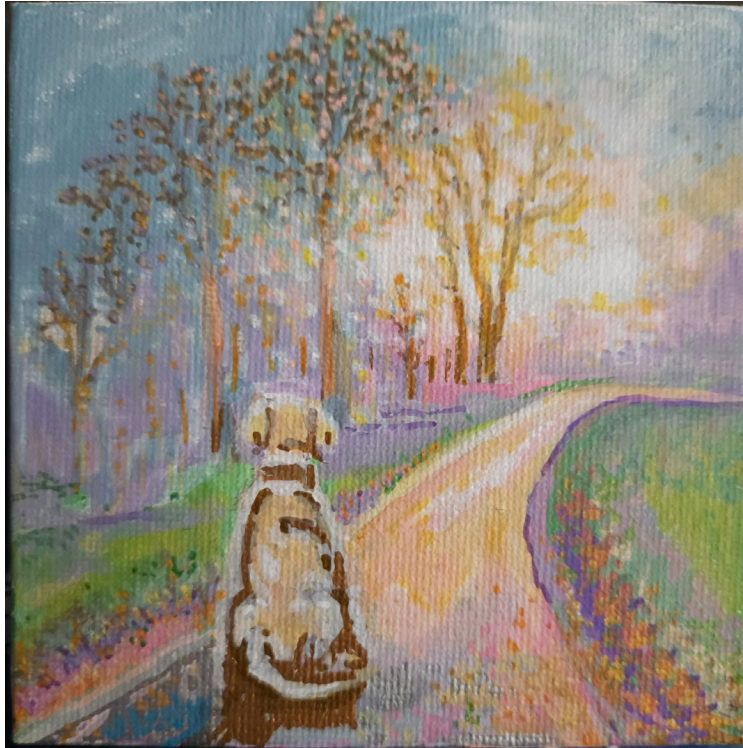
Mountain Irises



Acrylic on canvas board, 4 x 4 in.

Purple irises burst in the foreground, while cottages and peaks rise behind them — a celebration of color and place.

Blue Morning (Waiting Dog Landscape)



Acrylic on canvas board, 4 x 4 in.

A faithful companion sits at the edge of a winding path, gazing toward a luminous horizon.

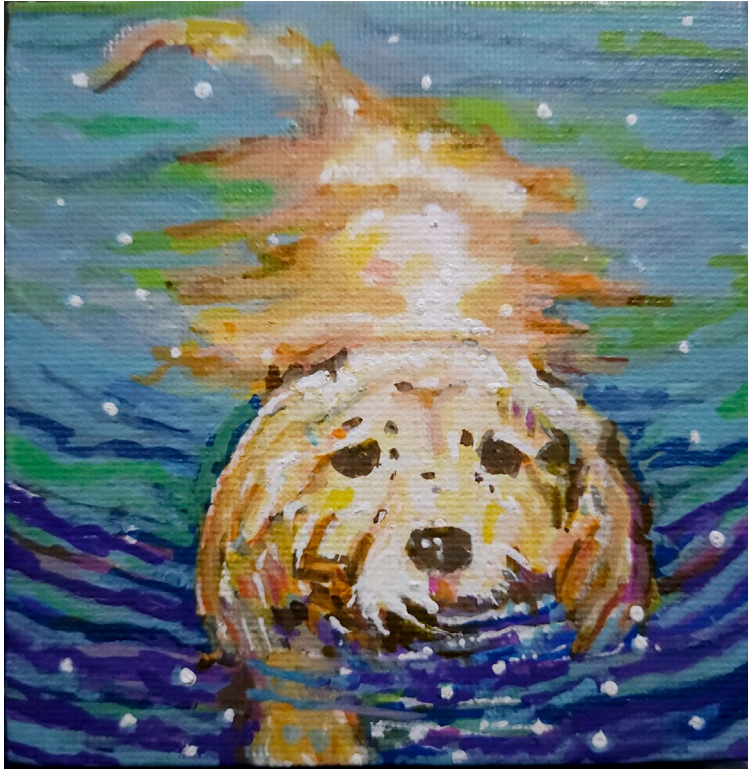
Snowy Pine



Acrylic on canvas board, 4 x 4 in.

A single pine stands in quiet strength, blanketed by snow beneath a wintry purple sky.

Swimming Pup



Acrylic on canvas board, 4 x 4 in.

A playful golden dog paddles through rippling water, sunlight sparkling across its fur.

Chestnut Horse



Acrylic on canvas board, 4 x 4 in.

The proud gaze of a horse, painted with vitality and strength.

Black Cat with Amber Eyes



Acrylic on canvas board, 4 x 4 in.

A striking feline portrait, its golden eyes alight against a richly colored, painterly background.

Fox and Cardinal



Acrylic on canvas board, 4 x 4 in.

A quiet woodland scene where a fox watches a bright red cardinal — a meeting of earth and sky.

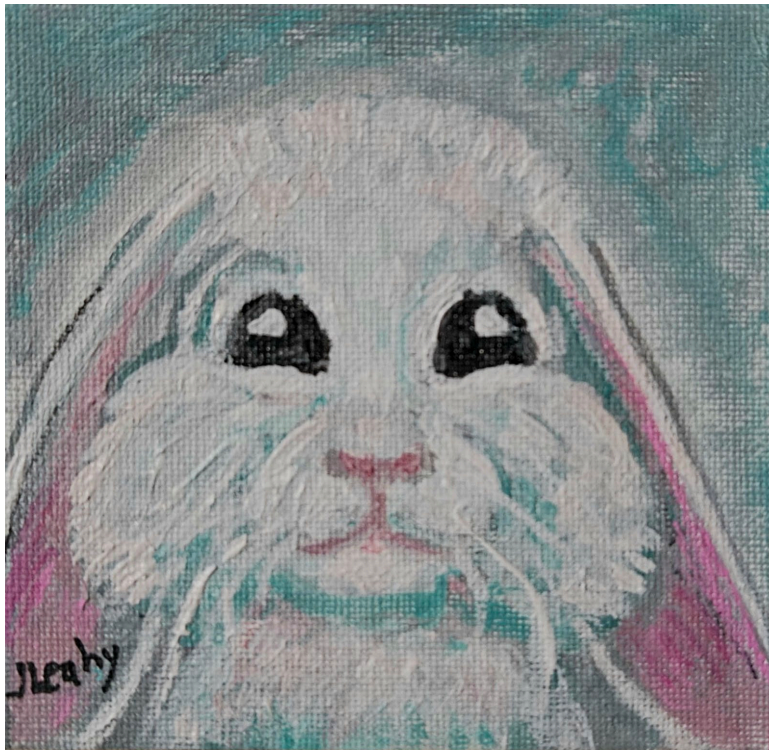
Crow in the Rain



Acrylic on canvas board, 4 x 4 in.

A striking black crow stands before a red umbrella in the rain — mystery and resilience.

Gentle Bunny



Acrylic on canvas board, 4 x 4 in.

A soft portrait of a white rabbit, painted with tenderness and pastel accents.

Stone Cottage in Winter



Acrylic on canvas board, 4 x 4 in.

sted among bare trees and snow, this rustic stone building glows with history and quiet endurance.

Moonlit Cottage



Acrylic on canvas board, 4 x 4 in.

A country house under a silver moon, its colorful roof and glowing windows suggesting warmth against the night.

Lifeguard Tower



Acrylic on gessobord, 4 x 4 in.

A lone figure walks toward an impression of a pink lifeguard tower, set beneath a sky alive with clouds and radiant colors.

Morning Brew



Acrylic on canvas board, 4 x 4 in.

A warm cup of coffee captured in rich browns and highlights, offering the comfort of daily ritual.

Summer Cherries



Acrylic on canvas board, 4 x 4 in.

Three bright cherries, lush and glossy, paired with green leaves on a light ground.

Emma Doll



Acrylic on canvas board, 4 x 4 in.

A whimsical portrait of a doll-like girl with bright big eyes, dressed in warm tones against a playful dotted background.

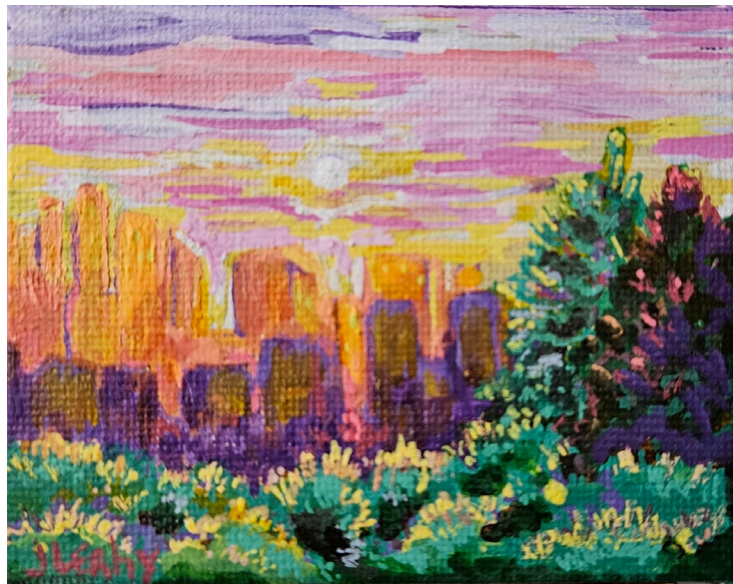
Blue Mountain Mist



Acrylic on canvas, 3.5 x 3 in.

Layered blue mountains and reflective waters, softened by morning haze.

Desert Glow



Acrylic on canvas, 3 x 3.5 in.

Fiery cliffs and a radiant sunset light up the desert, framed by blooming greens.

Summer Tree



Acrylic on canvas, 3.5 x 3 in.

A full, leafy tree painted in bursts of green and white, a living canopy in miniature.

Garden Terrace



Acrylic on canvas, 3.5 x 3 in.

A sunlit terrace alive with flowers and foliage, where warmth and color spill across the scene.

Crossroads



Acrylic on canvas, 3 x 3.5 in.

Mountains rise beyond an open highway intersection, suggesting choice, travel, and possibility.

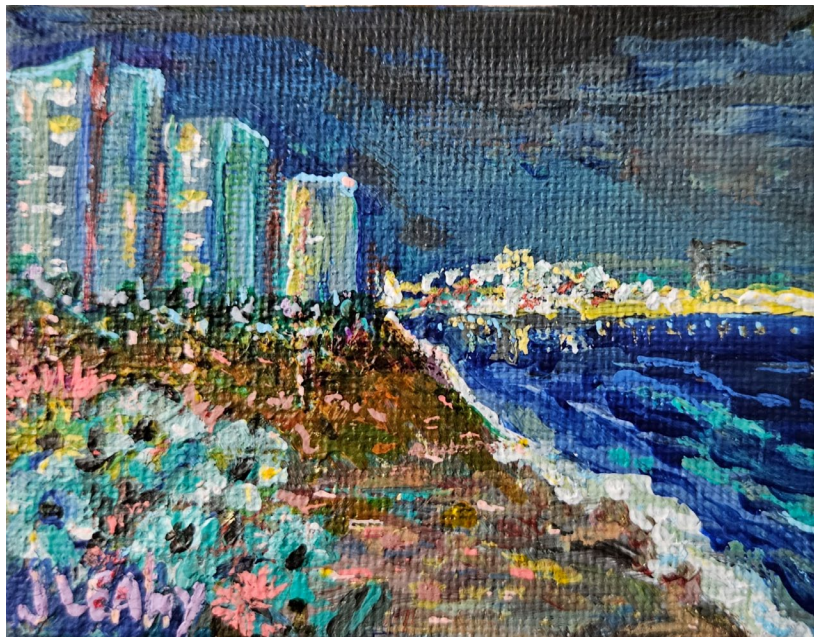
Poppies in the Field



Acrylic on canvas, 3 x 3.5 in.

Vivid red poppies dance against a backdrop of mountains and open sky.

City by Night



Acrylic on canvas, 3 x 3.5 in.

A seaside city glows under a deep sky, where shore lights meet dark water.

Curious Cub



Acrylic on canvas, 3 x 3.5 in.

A bear cub peers playfully from behind a tree, capturing innocence and woodland charm.

Valais Sheep



Acrylic on canvas, 3 x 3.5 in.

A small flock of Valais blacknose sheep — fluffy coats and dark faces full of character.

Harbor Pelican



Acrylic on canvas, 3.5 x 3 in.

A pelican rests calmly on a dock against a shimmering sea, capturing a quiet coastal moment.

Pink Rose



Acrylic on canvas, 3.5 x 3 in.

A lush, layered rose blossoms in radiant pinks and violets.

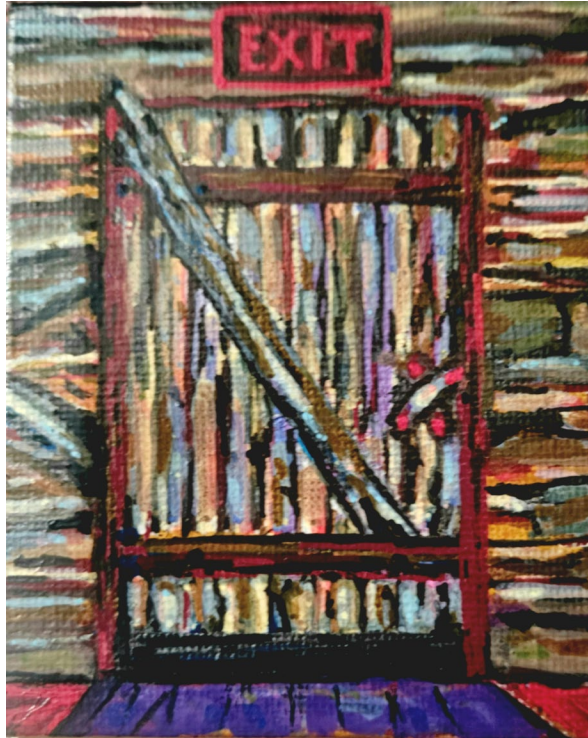
Country Truck



Acrylic on canvas, 3 x 3.5 in.

A rustic red farm truck, full of character, rolls along a winding country road.

My Door



Acrylic on canvas, 3.5 x 3 in.

This painting reflects the biblical image of the door as both refuge and covenant. Scripture tells us, “I am the door. If anyone enters by Me, he will be saved” (John 10:9). The weathered surface speaks of endurance through trial, while the reinforced frame suggests protection granted by faith rather than fear. This is not a barrier meant to exclude, but a threshold of discernment—where what is holy is guarded, and entry is guided by wisdom, obedience, and trust in God’s keeping hand.

About the Artist

J. Leahy’s miniatures capture landscapes, seascapes, animals, flowers, and intimate moments with luminous color and narrative detail.

Contact

Email: _____

Website: _____

Instagram: _____